



Water Filter and Replacement Cartridge Distribution Program

The City of Newark is distributing free NSF-certified faucet-mounted water filters, water filtering pitchers, and filter replacement cartridges to eligible residents in single and multi-family homes in order to reduce lead exposure. Filters that are properly installed and maintained are over 99% effective at reducing lead to below 10 parts per billion (ppb) when filtering follows flushing the tap for at least 5 minutes. Reference this flyer and the website: www.newarkleadserviceline.com/filters, for best practices when using these devices in your home.

1 INSTALL

Visit the City's program website:
www.newarkleadserviceline.com/filters

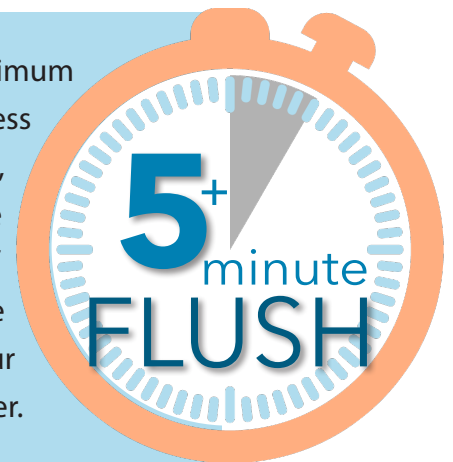
2 USE

Run cold water for at least 5 minutes to flush out lead before using your water filter, and after an extended period of non-use of water.

3 MAINTAIN

- ▶ Change your faucet filter cartridge every 3 months, your pitcher cartridge every 2 months, or when the indicator light turns red for either type of filter.
- ▶ At each filter cartridge change, rinse filter with cold water before use.
- ▶ Remember to clean the faucet aerators/screens every 3-4 weeks.

For maximum effectiveness in removing lead, flush your line for a minimum of five minutes before using your water filter.



Preliminary testing results performed by the City, the New Jersey Department of Environmental Protection, and the U.S. Environmental Protection Agency showed that 97-99% of filters tested removed lead below 10 parts per billion. Tests showed properly installed and maintained PUR filters, distributed by the City, reduced lead to 10 ppb or below in 97.5% of filters and 99.5% of filters after flushing for 5 minutes.

FLUSHING + PROPER USE = 99.5% effective*

RESOURCES:

WWW: www.newarkleadserviceline.com/filters **YouTube:** type in "PUR water filter" in search bar for video instructions

Testing: Residents can have their water tested at no charge by contacting the Department of Water and Sewer Utilities at (973) 733-6303 or emailing waterandsewer@ci.newark.nj.us to request an inspection.

*99.5% effective at providing drinking water with lead levels at 10 ppb or below when filtering follows flushing the tap for at least 5 minutes.

1 INSTALL YOUR WATER FILTER

Watch the step-by-step instructional videos detailing installation, usage, and maintenance of your water faucet filter or water pitcher filter.

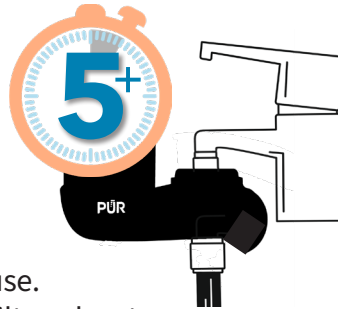
Visit: www.newarklead serviceline.com/filters for easy-to-follow video installation instructions.



Attach unit onto your faucet until you hear a click.

2 USING YOUR WATER FILTER

Faucet Filters. With filter in OFF position (lever up), run only COLD water through the faucet for at least 5 minutes in order to flush after water has not been run for several hours.

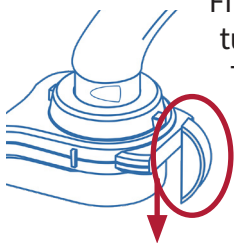


Filter is now ready to be turned ON for cold water use.

Turn down the lever for filtered water.

Do not run water through a faucet filter for more than 2 minutes at a time. Rest the filter for 18 minutes after 2 minutes of use.

If you have a service line that is over 75-feet, or a longer than typical yard in Newark, flush for at least **8 minutes**.



Pitcher filters should only be used for a maximum of 2 gallons of water per day for up to a total of 40 gallons before filter cartridge replacement. Flush the faucet for at least 5 minutes prior to collecting water to flow through the pitcher filter.



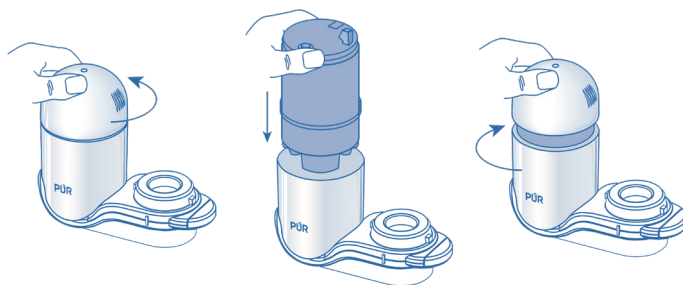
3 MAINTAIN YOUR WATER FILTER

Follow the manufacturer's instructions included with your filter packaging. Instructional videos on changing your filter cartridge at: www.newarklead serviceline.com/resources

FAUCETS

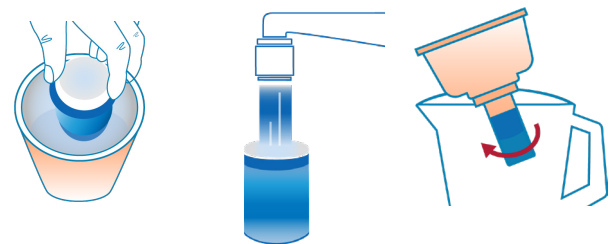
Twist off the top of your mount unit, drop your filter cartridge into the unit, replace the top cover, and rinse with cold water with the filter in the "on" position (lever down) for 5 minutes.

► Clean the faucet aerators/screens every 3-4 weeks.



PITCHERS

Soak new filter for 15 minutes. Flush for 10 seconds and drain. Install into pitcher shroud by turning clockwise to lock.



FILTER INDICATOR LIGHTS



Be sure to get your replacement cartridges through the Newark filter distribution program and to properly maintain and replace the filtration device in accordance with the manufacturer's recommendations and instructions. If you decide to purchase replacement cartridges on your own, make sure they are NSF 53 certified specifically to reduce lead.



Department of Water & Sewer Utilities
B31F, 920 Broad Street, Newark, NJ 07102